

## Color Accuracy

When using a CMYK color profile to ensure color accuracy during printing, make sure all spot colors (Pantone, etc.) are changed to CMYK.

RGB color profile is also fine but make sure all spot colors (Pantone, etc.) are changed to RGB as well.

## Fonts & Text

To avoid font conflicts or issues during the printing process when working in a vector-based software, like Adobe Illustrator, we recommend:

Save your .AI file with the fonts intact as text

Save an .EPS file with the fonts outlined

For final art for print, outline fonts and save as a .PDF file

When working in Adobe InDesign, be sure to embed the fonts when exporting the document as a .PDF for print.

If your project is designed in Adobe Photoshop, flatten your image before generating a .PDF file. This will rasterize your fonts to prevent font issues.

## Resolution

For an image to print properly, its resolution must be at least 300 dots per inch (DPI) at the final output size.

Files with resolutions higher than 300dpi are ok to send for print, but not necessary, and the higher resolution will not improve the printed quality of your project.

## Typos & Grammar

Make sure to spellcheck and proofread documents in detail before uploading.

Printers assume no responsibility for typographical errors or grammatical mistakes.

## File Formats

Feel free to download template to create your final file. High resolution, print-ready PDF files are the preferred file format.

### Visible Print - BLACK OUTLINE

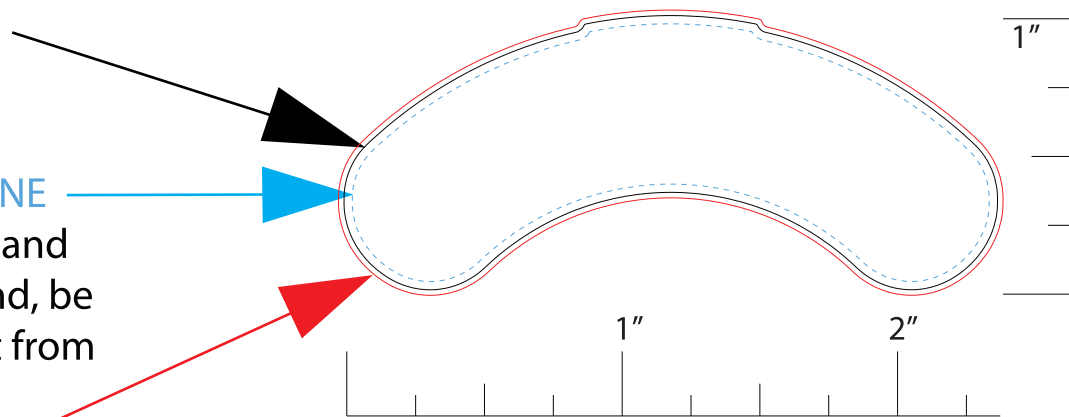
This is your finished print area.

### Text Safety Zone - BLUE OUTLINE

We recommend all text, logos and images besides the background, be inside of this area to prevent it from being cut off.

### Bleed - RED OUTLINE

Your background should reach this line. Use clipping mask with this layer.



- Use RGB or CMYK (1 or the other, but not both)

- Resolutions must be 300 dpi

- All fonts must be created to outlines